

Chapter 11 Software Setup

11.1 Open software setup

Click on “Options” button and select “Software Setup”, as shown in image 11-1. This window contains three sub-menus: LED screen window, Communication parameter and Default parameters.

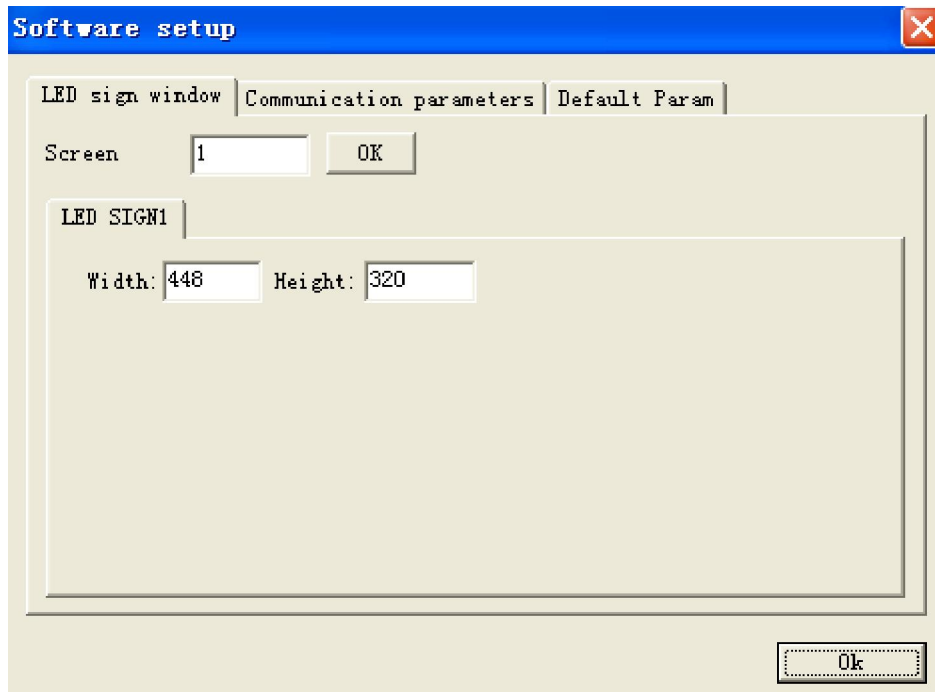


Figure 11-1

11.2 LED sign parameter

Screen: The number of LED screen. Input number and then click “OK”, while the default number is 1.

Width and Height of LED sign: with these two parameters, users can set up the size of preview window.

11.3 Communication parameters

There are two types of Communication modes: Single mode and Multi-mode, as shown in image 11-4.

Single mode(Recommended):One LED screen for one LED project,(most of them work in single mode)

Multi-mode: several LED screen with same pixels (including Width and Height) for one LED project.

When changing single mode to multi-mode, users need to input password “888”.

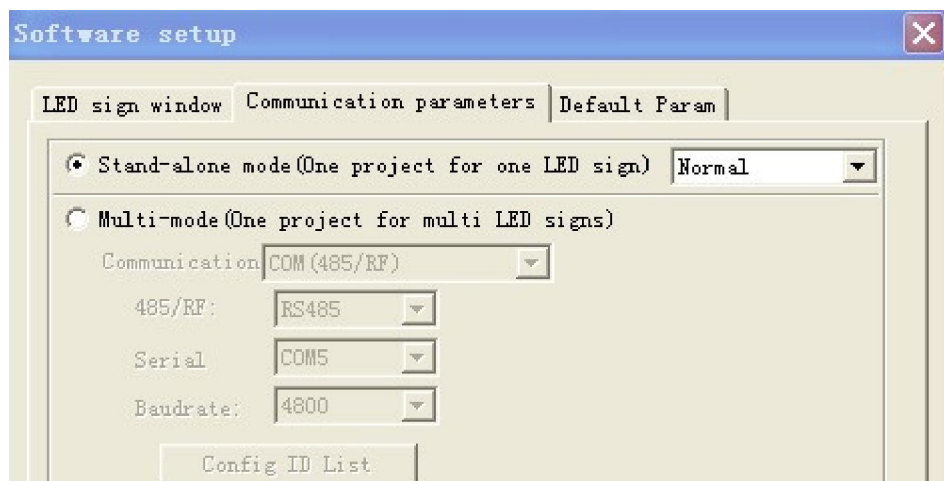


Figure 11-2

11.4 Default Parameters

Setup basic parameters for programs, it also the default parameters when open various windows, as shown in image 11-3 in below:

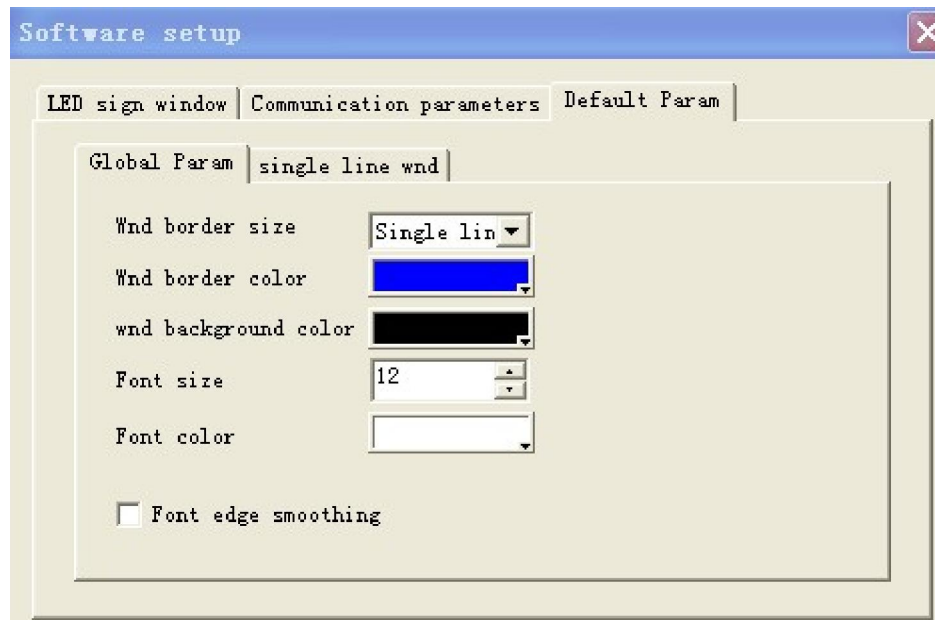


Image11-3